

## SP, Door, Clean-out SP, Gasket, Tank Door

2599640  
2599641  
2599642  
2599643



These instructions apply to the following kits:

Part No.	Description
2599640	SP,GS(S2), Door, Clean-out, Single
2599641	SP,GS(S2), Door, Clean-out, Double
2599642	SP,GS(S2), Gasket, Tank Door, Single
2599643	SP,GS(S2), Gasket, Tank Door, Double

### Kit 2599640 Includes:

1x Tank Door (with insulation)	1x Gasket
1x Sacrificial Anode	14x, Screw, Flanged, Hex Head, M6x25
	4x Nut, Hex, M6x1

### Kit 2599641 Includes:

1x Tank Door (with insulation)	1x Gasket
1x Sacrificial Anode	16x, Screw, Flanged, Hex Head, M6x25
	6x Nut, Hex, M6x1

### Kit 2599642, 2599643 Includes:

1x Gasket

### Safety Precautions:

All procedures described in this document must only be performed by personnel who are adequately qualified, familiar with the humidifier unit, well trained, and are authorized by the customer.

Only use the supplied hardware in the kit.

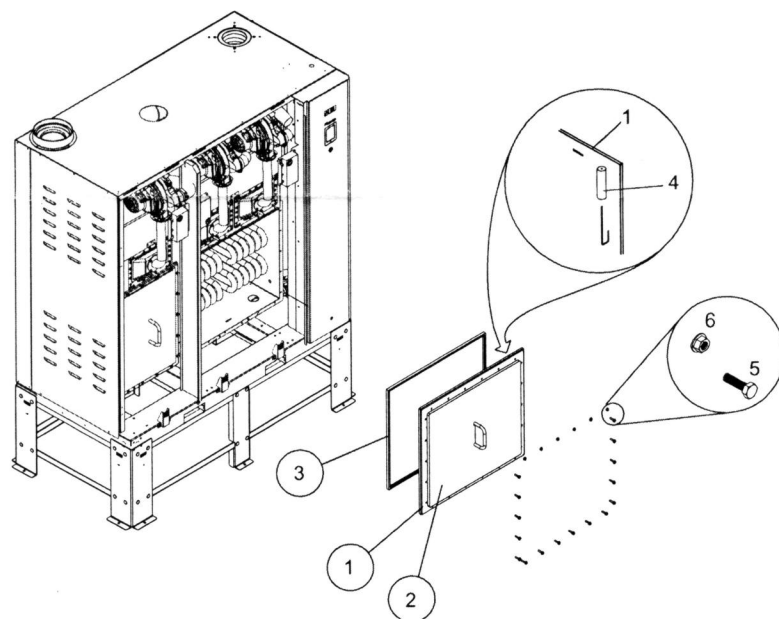
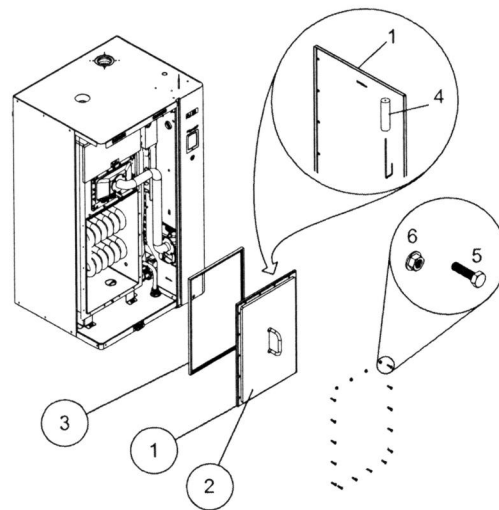
Observe all safety precautions described in the Operation and Maintenance Manual.

### Before You Start:

1. Use the Clean Tank function in the control software to flush and empty the tank. Then shut down the humidifier as described in the Operation and Maintenance Manual.
2. Disconnect the power supply to the humidifier, and lockout and tag the power supply.
3. Remove the door panels from the unit.

**Note:** Some water may remain in the bottom of the tank after the Clean Tank function completes. Take care when removing the tank doors in case the tank is not fully drained. Use the manual drain valve to remove any remaining water.

## Overview:



### Overview (Full-size and Compact Unit Shown):

- 1. Tank Door
- 2. Insulation

- 3. Gasket
- 4. Sacrificial Anode

- 5. Screw
- 6. Nut

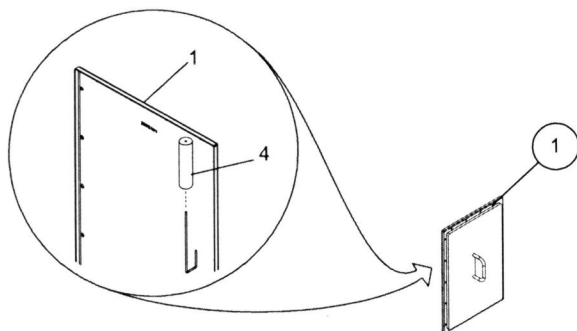
### Removal Procedure:

1

Remove the screws and nuts that secure the tank door to the unit. Discard the gasket, door, sacrificial anode, nuts, and screws. Clean the tank if necessary.

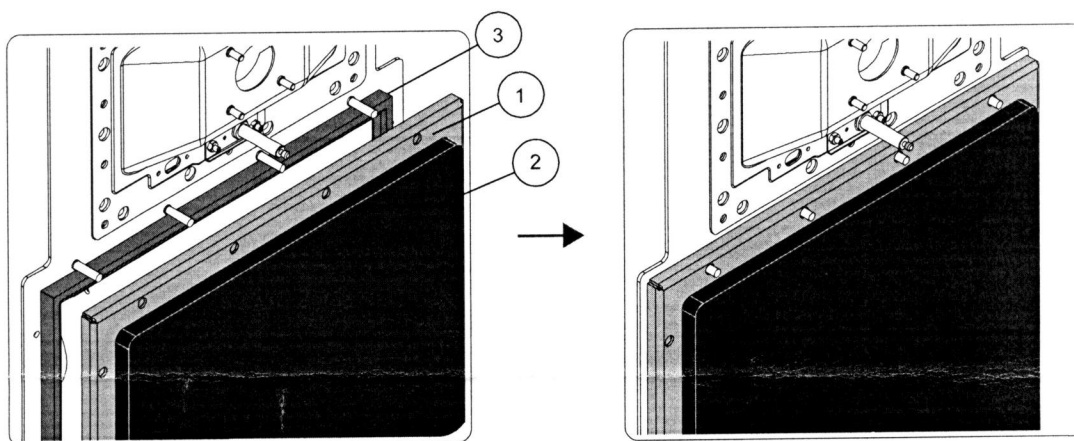
## Installation Procedure:

1



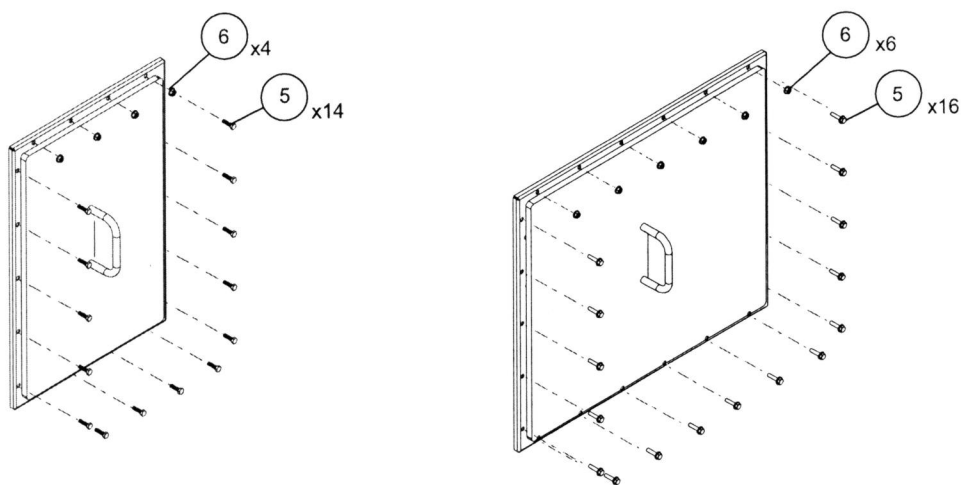
Ensure the sacrificial anode (4) is oriented upwards and rests over the bracket behind the tank door (1).

2



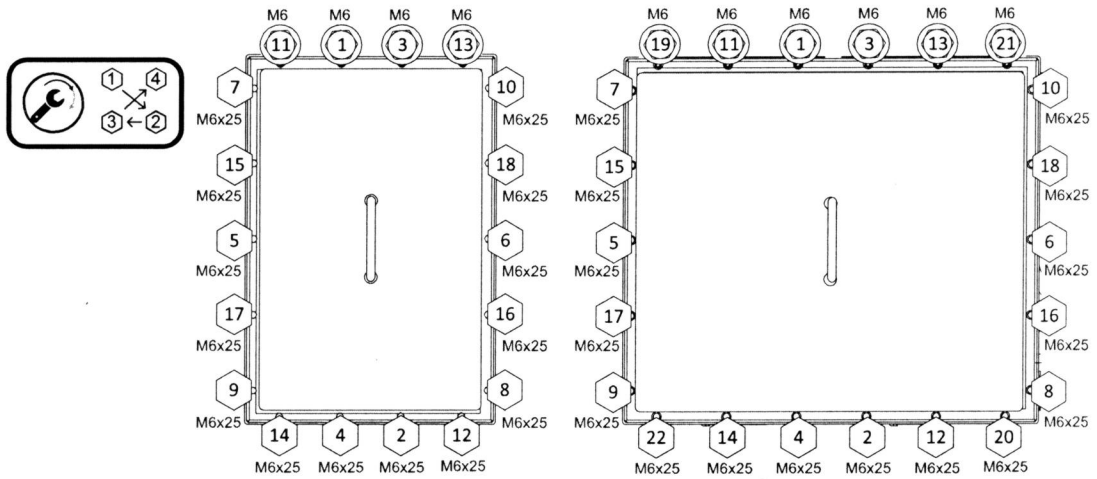
Place the gasket (3) and door (1) over the tank opening. Ensure the gasket is between the tank and the door.

3



Lightly secure, or finger tighten, the door to the tank with screws (5) and nuts (6).

# 4



**M6x1: 7.91 Nm (70 in-lb)**  
**M6x25: 7.91 Nm (70 in-lb)**

Use a wrench to tighten the screws and nuts. Follow the torquing pattern.

Repeat the torque pattern twice to ensure screws and nuts retain torque values.

